



## **A future for Clark's Old School**

# Some history...

## **Extract from Lawrence Clark's Will and Codicil**

***made on 15 August, 1789 (and proved on 22 January, 1798)***

- "This is the last Will and Testament of me Lawrence Clark of Wigglesworth in the County of York Yeoman...
- "And as to for and concerning all the rest residue and remainder of my Personal Estate and Effects...I Give and Bequeath the same and every Part thereof...In the First Place...in the erecting of a school at Wigglesworth aforesaid...
- "Then upon Further Trust...apply the clear yearly Interest and Produce...to purchase Books for poor Children...to and for the Benefit of a Schoolmaster...for teaching Children without Expence to their Parents at Wigglesworth aforesaid...
- "And it is my Will that the said School shall be for ever called Clarks Free School for the Children of Wigglesworth...

# Some history...

The Trustees agreed on 23 December 1797

“...to front the School towards the Road...that the School shall be nine yards long within the Walls and six yards wide, Oak Timber for Roof, Deal floor, six yards high from the Threshold...Windows to be about four feet high...”.

Robert Silverwood (“of Giggleswick, Mason”) and William Wildman were appointed to build the school in April 1798 and work seems to have progressed speedily, as Robert Silverwood paid bills across the Spring and Summer for work undertaken. The total costs in 1798 came to £157/0/4 paid by Robert Silverwood, plus £48/14/6 incurred as his own costs.

On 28 December 1798, the Trustees

“...having viewed and examined the school unanimously approve of the Building...”

# Some history...

On 7 May, 1799, the Trustees met to agree the "Statutes Ordinances Resolutions and Orders" for the school. At the same meeting, they elected "Thomas Wildman of Longpreston" Master of the school.

Between May and November the school hours were from 7.30am until 11.30am and from 1.30pm until 5.30pm. Between November and May, the hours were from 8.00am until 12.00 midday and from 1.00pm until 5.00pm.

Thomas Wildman was paid his first salary instalment in November 1799, and, as the lists of pupils are recorded in mid-November and mid-May, it is logical to assume that the School opened in its new building in November 1799.

Free education for the children of Wigglesworth continued in the same premises until the school was closed around 1962.

However, the Trustees of the school retained their control of the premises, and received the agreement of the Charity Commissioners so that "Clarks Old School" should continue be used for the benefit of all the children and residents of Wigglesworth.

# 1962 to 2007

The Old School was used for a number of community activities and events

In 1980s, to improve facilities, the Trustees installed mains water and an indoor flush toilet

However, by the Millennium, it was clear that the facilities at the Old School were not suitable to sustain and support the requirements of the community, and were not attractive to many potential users

It was then discovered that the wall alongside the Tosside road was in a potentially dangerous condition, and needed £80,000 to reinstate

After many discussions, as well as public consultations, it was decided to apply for funding to undertake significant redevelopment work

# 2007

The Trustees worked with architects to develop a scheme that would offer improved facilities, and enable a wide range of activities, events and projects to be delivered in the local community

Following further public discussions, an application was made to the Big Lottery Fund for just under £250,000

The application succeeded in getting through to the second stage of the process, and some financial assistance was provided to develop the plans further.

# 2008

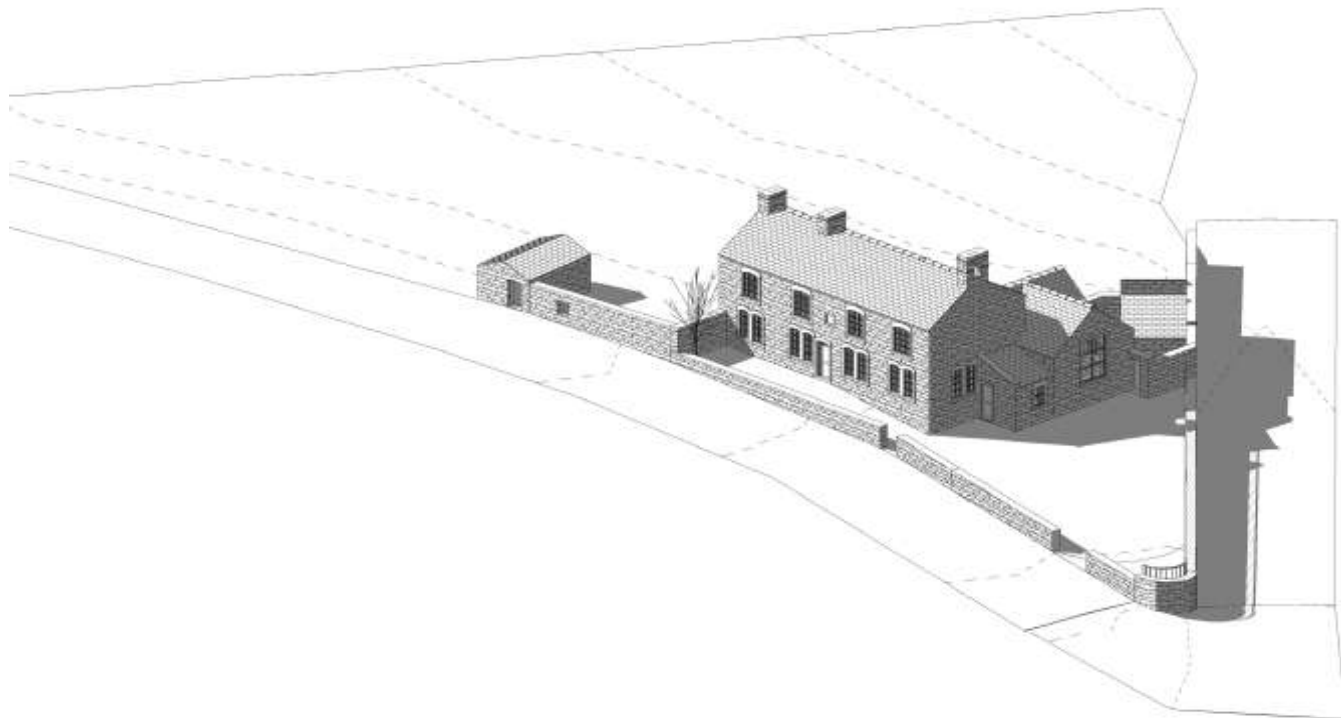
A final detailed application plus Business and Financial Plan is about to be submitted

Before this is finalised, the Trustees want to make sure the local community remains committed to the project, and that you feel the proposed projects are what you want...or can be added to further by additional ideas

The Trustees have also revised the plans for the actual building, incorporating a number of eco-friendly aspects, and so want to share these too

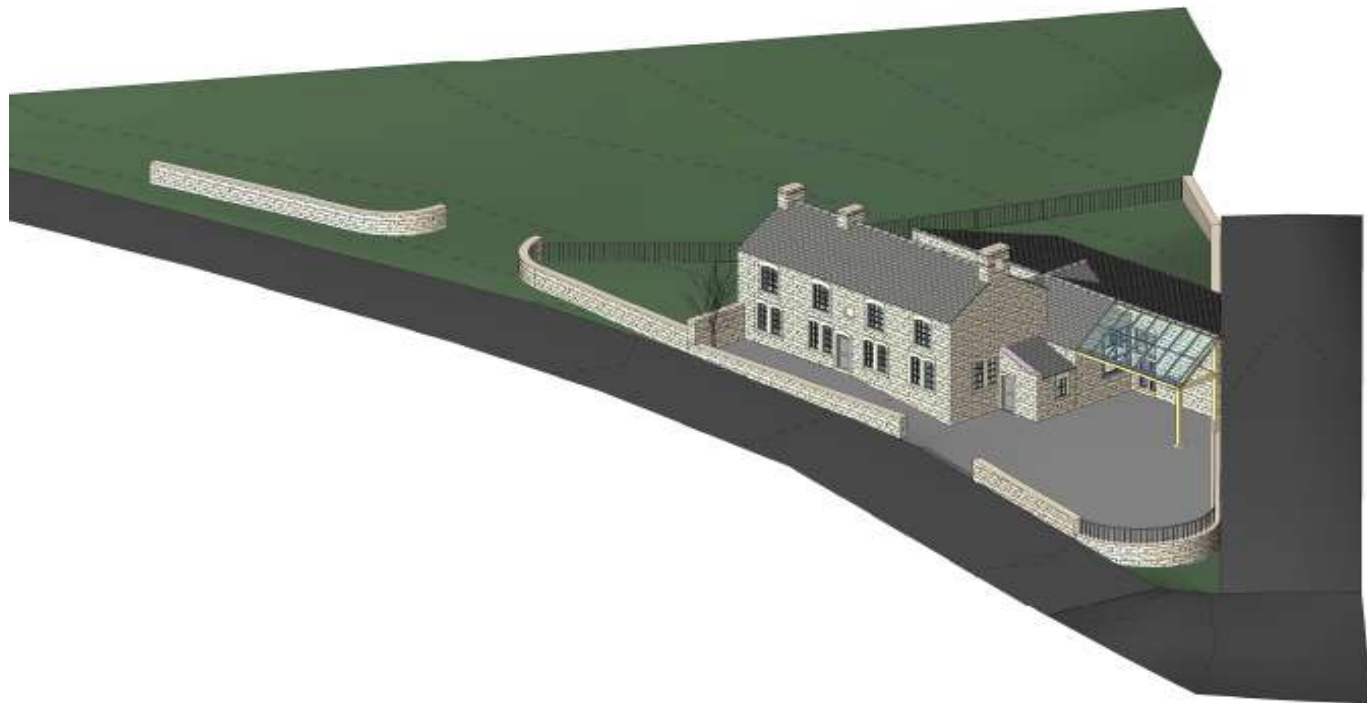
Please complete one of our survey sheets before you leave today and tell us what you think 😊

# The "Old" Old School



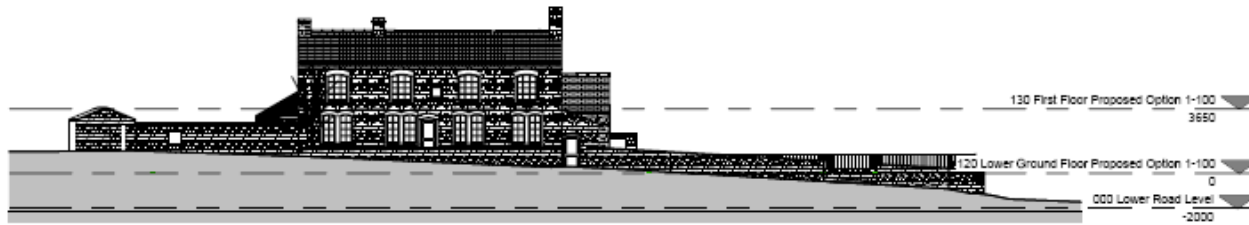
080 Site Isometric Existing

# The NEW Old School



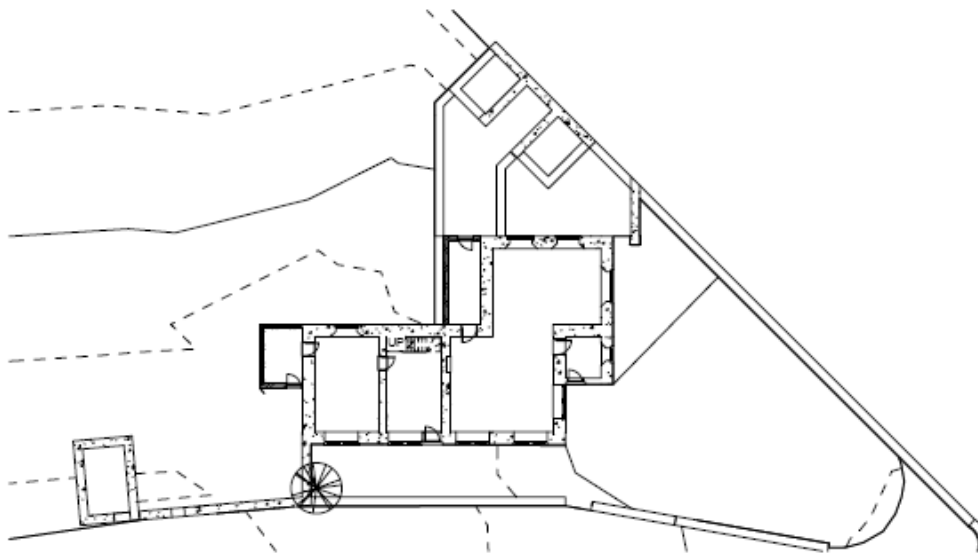
180 Site Isometric Proposed

# From the front...now



**003 South Existing 1-200**

1:200

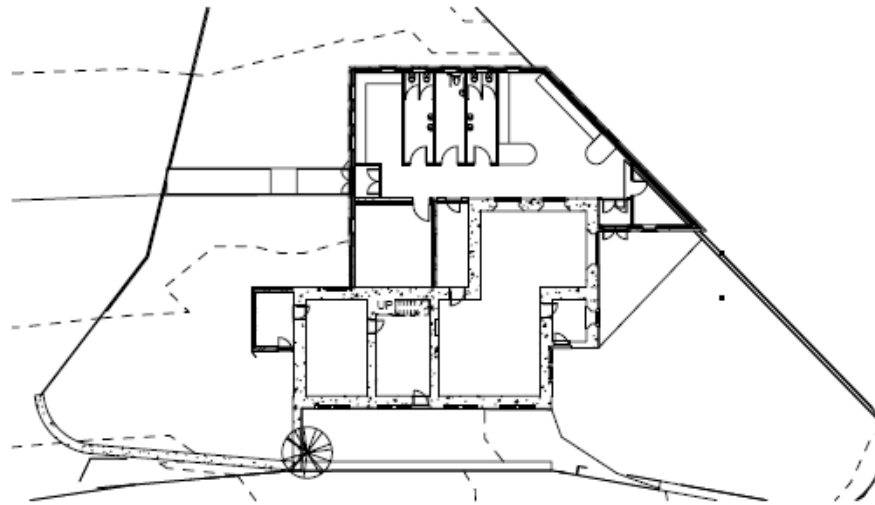


**020 Lower Ground Floor Existing 1-200**

# From the front...proposed



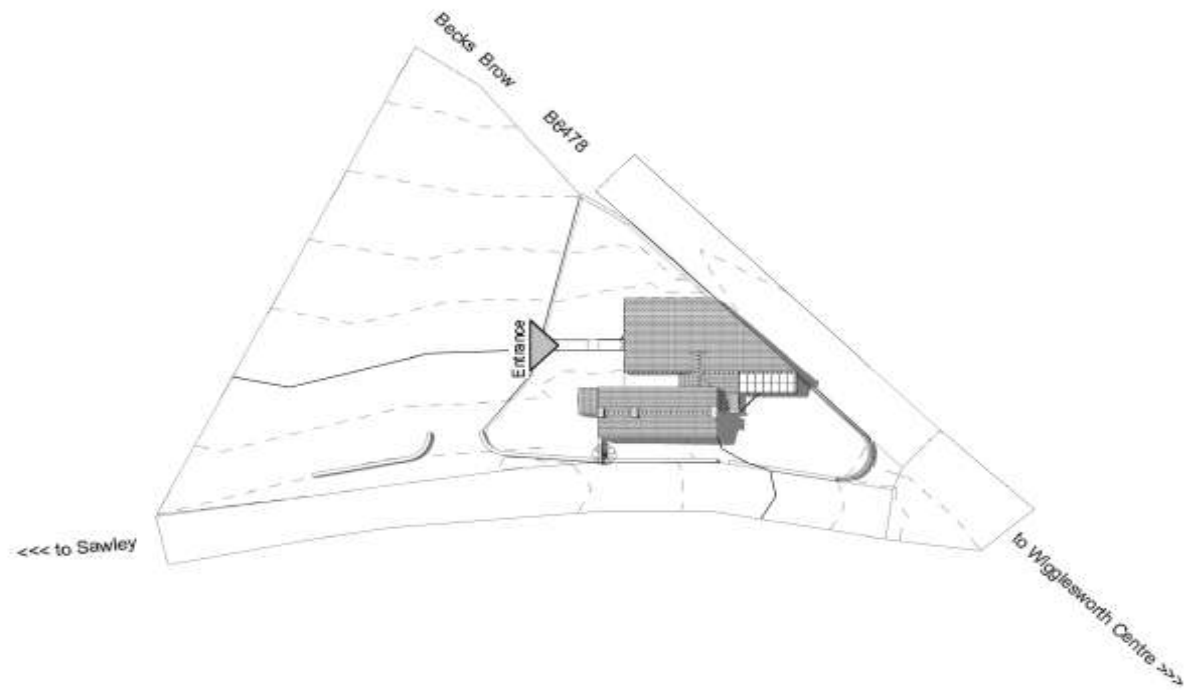
**103 South Proposed 1-200**  
1 : 200



**120 Lower Ground Floor Proposed Option 1-200**



# Proposed bird's eye view



# Planned projects: Community use

- Children's and smaller family parties
- Young Farmers and Youth Club
- Coffee Bar and Drop in for Young People
- Parish and Parish Council Meetings, the Village Show,
- Worship
- Rural Arts Events
- Clubs eg Embroidery, Wine, Local History & Classes eg Tai Chi, Photography

# Planned projects

In addition to general community use of the building there are a number of projects that are being planned to be based in the Old School. We'd like your thoughts...

- IT facilities with broadband access – for public use, for “hot” offices
- Summertime weekend café for passing cyclists and visitors
- Use of the building by external agencies for Pre-school childcare provision, plus after-school and holiday clubs
- Regular visits by Surgery nurses, Citizens Advice, Craven DC, Age Concern lunches and activities etc
- Training courses, cultural events, fun events

Please complete the survey before you leave... you could win an iPod Nano

# How will the building managed?

- Initially and principally through volunteers until demand and income streams are established (some funding available)
- Project Management Team to oversee the build
- Centre Management Team then takes over
- Volunteer(s) to open and man the centre on a rotational basis- Volunteer co-ordinator an important role
- We anticipate that volunteers will be interested in and work on specific activities
- Child care activities would be run by external agencies (eg Craven Childcare) renting the facilities and are subject to established demand

# What next...?

Finalise the detailed second-stage application to Big Lottery Fund

However, BLF will not cover running and overhead costs going forwards, so...

- please actively support the application and the Trustees
- events and activities will need to at least “wipe their nose”!
- register now as a future volunteer
- will you help now by joining a 100 Club aimed at building up funds (and you could win £100!)
- make sure you use the NEW Old School !